

Color Theory Binder

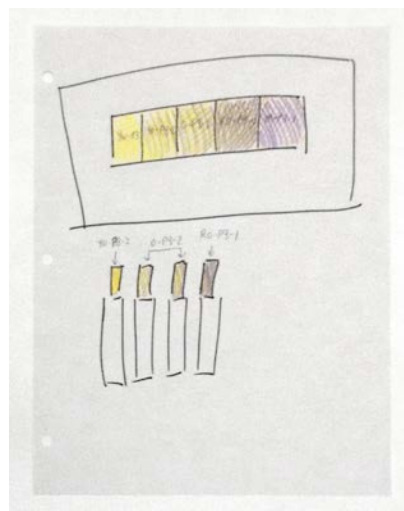
A BRIEF DESCRIPTION:

This binder will document your process and findings as we explore color and color relationships. It will be collected as needed and at the end of the quarter along with the final project.

REQUIREMENTS:

- 3-ring binder dedicated to color theory, an inch or more spine is large enough
- Color wheel (this may be a [spinning wheel](#) in a pocket of the binder or in a plastic sheet protector, or it may be a color printout of a [color wheel](#) that is hole-punched and added to the binder)
- Black paper, at least one sheet (this will be useful when a black background is needed for evaluating colors)
- White copy paper, multiple sheets (these will be used for notes, sketches, and for evaluating color on a white background)
- In-class assignments placed in clear plastic [sheet protectors](#)
- Sketches describing in-class projects, hole punched or in plastic sheet protectors
NOTE: in-class color-aid projects are to be mounted on Bristol board or black presentation mat board and must include a colored pencil sketch (or a color printout from a digital sketch) that clearly lists the code for each piece of color-aid paper. See examples below. Out-of class experimentation or personal studies do not need to be formalized in this manner unless you choose to do so.
- OPTIONAL: Additional notes or other items as you see fit

EXAMPLES:



< colored pencil sketch with codes

