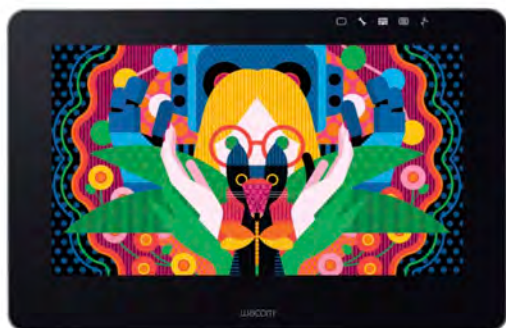


WACOM GUIDE

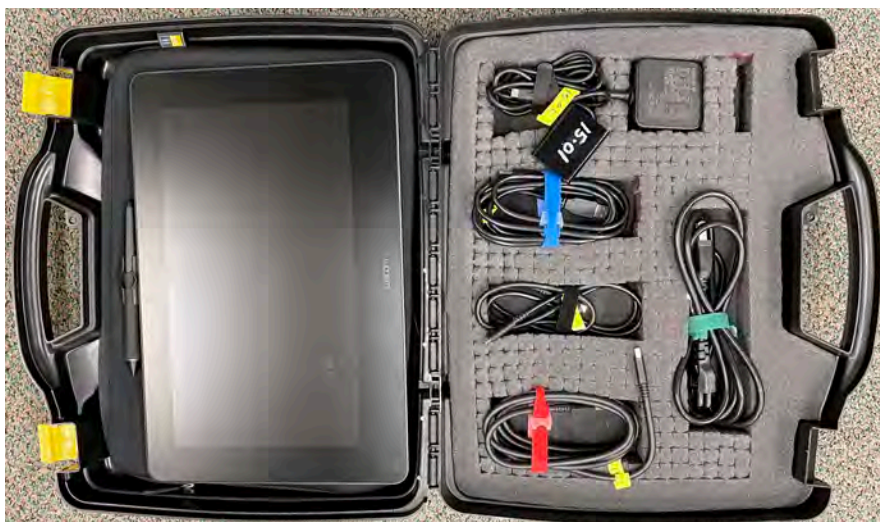


Wacom Cintiq Pro 13
& Wacom Pro Pen 2

NOTE: This Wacom operates through a connected computer. The software (like Adobe) must be on the connected computer to use it.

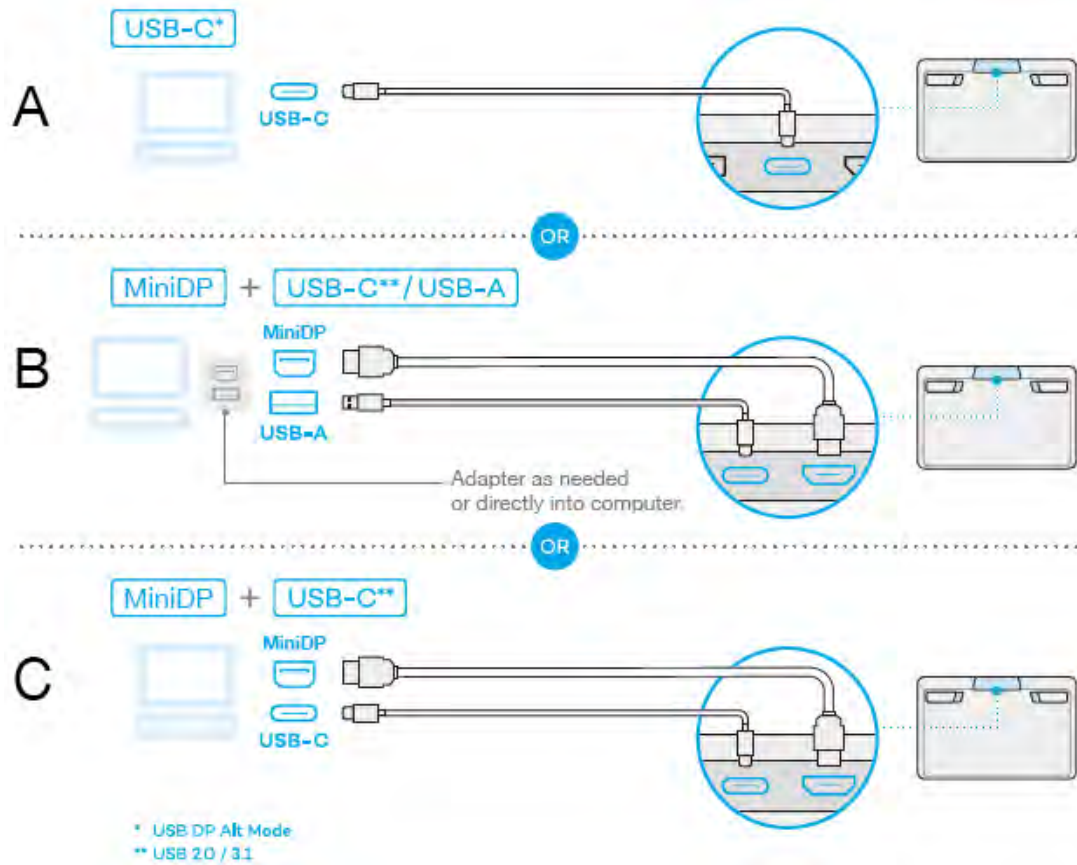
SET UP EQUIPMENT (as needed)

1. Add the Wacom driver to the computer you plan to connect to the Wacom. Google "Wacom Drivers" or go directly to:
<https://www.wacom.com/en-us/support/product-support/drivers>
Search for Cintiq Pro 13.
Download and install the driver.
2. If you are borrowing the Wacom tablet from the Art School AV checkout, familiarize yourself with the equipment in the box:

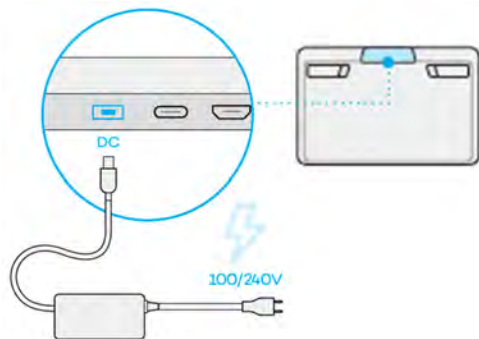


A. Tablet in protective sleeve B. Power cords
C. USB-C cord D. Adapter E. USB-A cord F. Mini Display cord

3. Connect the equipment to your computer in one of the following ways depending on your computer port options:

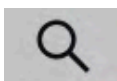


4. Connect the Wacom to power.



OPEN THE SOFTWARE

5. Go to the top menu bar on the computer desktop and click on the magnification glass icon on the right-hand side of the menu bar. This will open the search function, called "Spotlight Search"



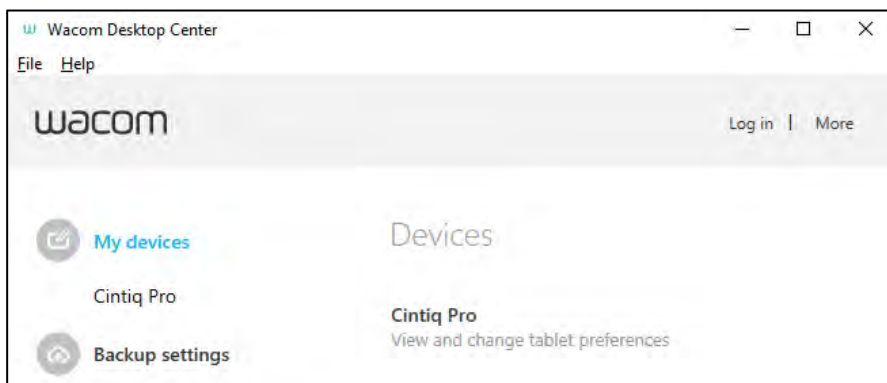
6. Type: **Wacom** into the search field.



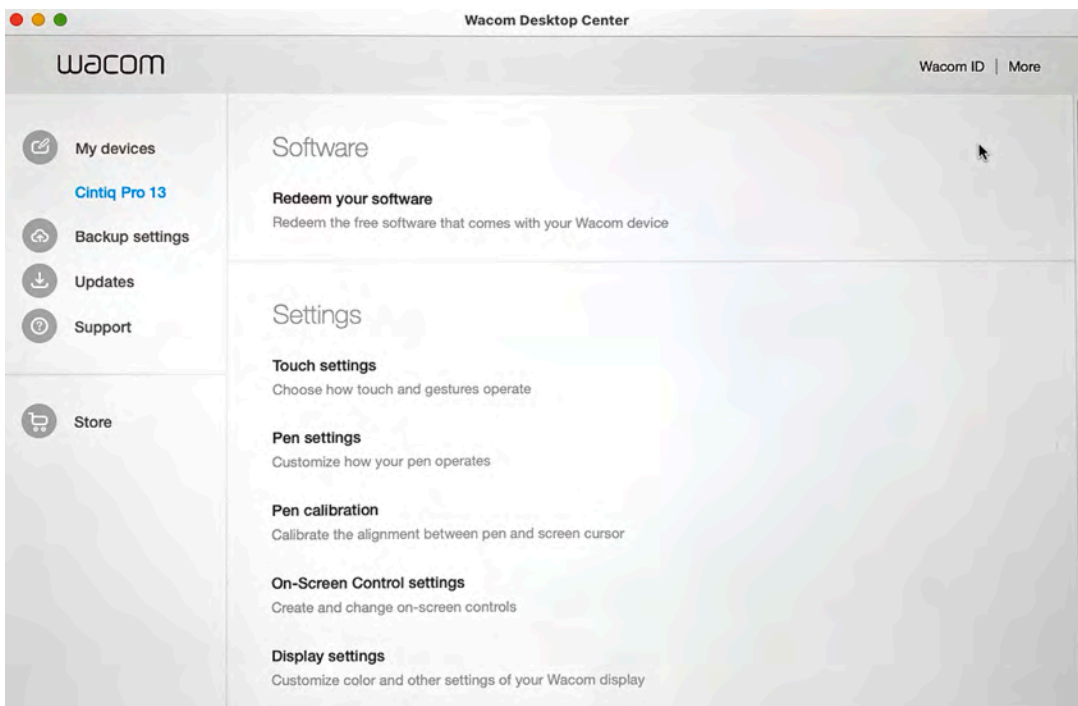
7. Choose the Wacom App (Wacom Desktop Center)



8. Go to My Devices and select the Cintiq Pro 13 tablet
If the tablet is not listed, make sure it is plugged in and tap the tablet to wake it up.

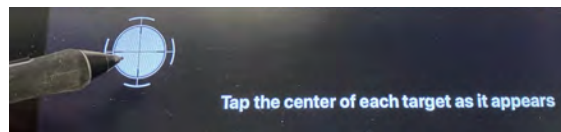
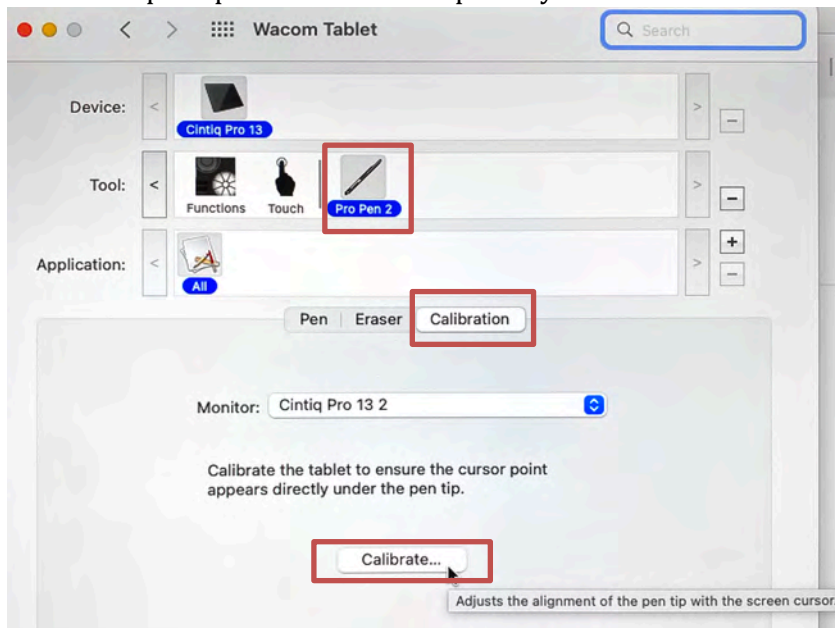


9. Customize the settings as needed

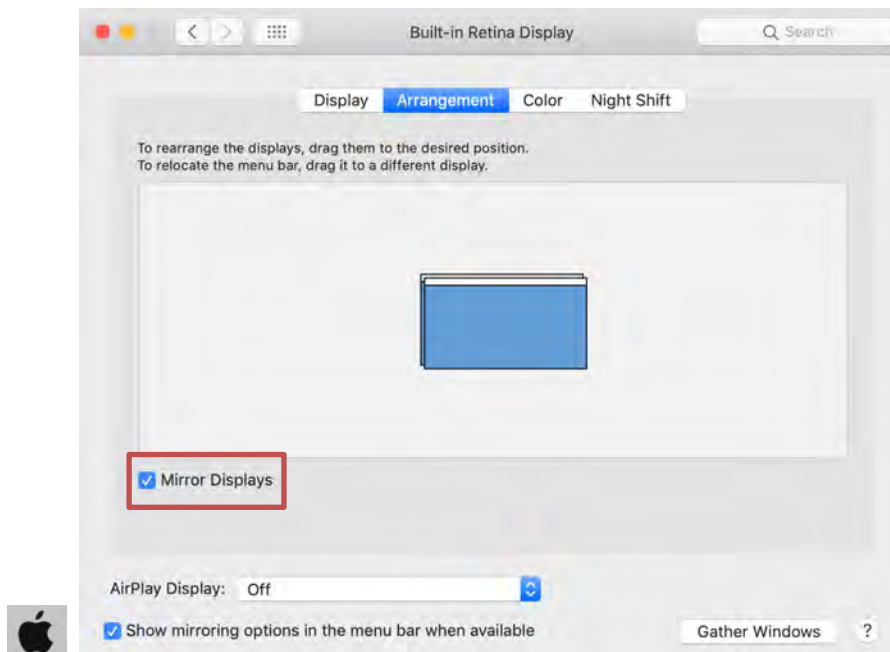


10. Common items to customize as needed are PEN CALIBRATION & DISPLAY SETTINGS:

Go to PEN CALIBRATION menu > go to the CALIBRATION TAB > hit the CALIBRATE BUTTON
Follow the prompts to calibrate the pen to your hand.



Go to the APPLE ICON menu in the upper left > go to SYSTEM PREFERENCES > DISPLAY
Check the box next to Mirror Displays



11. Use your tablet and pen as a cursor to navigate to the software you want to use and begin!